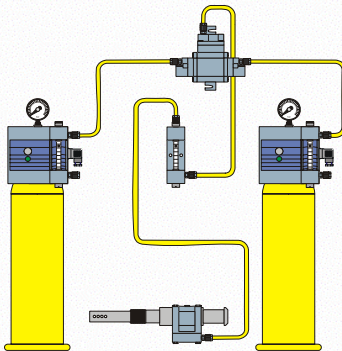


Vaccum switchover type M 400 and M 440



General :

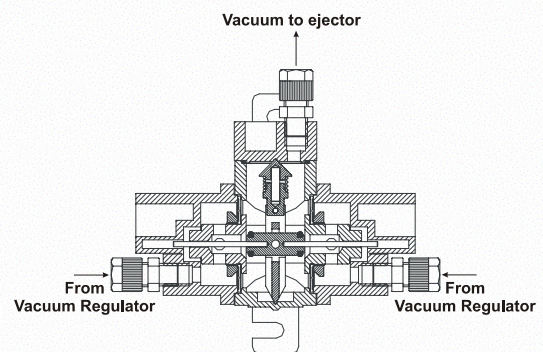
Vaccum switchover is a device which in case of empty cylinder or container, automatically switches to full cylinder or container. The switch occurs mechanically and no additional energy is required.



Vaccum switchover for up to 80kg/h

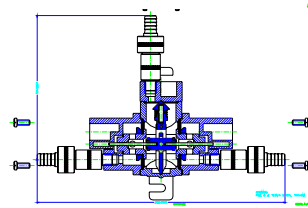
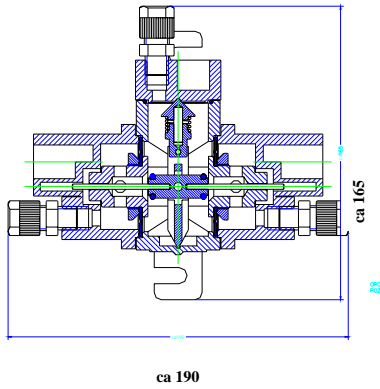


Vaccum switchover for up to 10kg/h



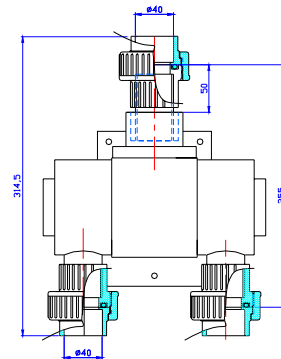
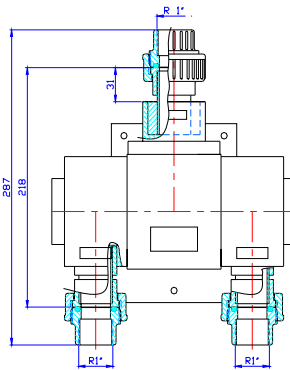
Measure drawings :

M400/1



M440/40

M440/80



Technical data :

Model:

- M 400/1- up to 4kg/h
- M 400/2- up to 10kg/h
- M 440/40- up to 40kg/h
- M 440/80- up to 80kg/h
- M 440/120- up to 120kg/h

Dosing ranges and connections :

- 1-Up to 4kg/h-**D8/10**
- 2-Up to 10kg/h-**D12/16**
- 40-Up to 40kg/h- **d32**
- 80-Up to 80kg/h- **d40**
- 120-Up to 120kg/h- **d50**

Gas Types :

- C=Cl₂
- S=SO₂
- N=NH₃

Weight:

M 400/1:	0,5 kg
M 400/2:	0,55 kg
M 440/40	3,3 kg
M 440/80	10 kg
M 440/120	10 kg

Order Codes :

M 400/ 1 Y C

Model _____
 Dosing range _____
 El. signal(yes/no) _____
 Gas Type _____



YOUR PARTNER IN WATER TREATMENT TECHNOLOGY

Fajfarjeva 15, 1230 Domzale, Slovenija

Tel. +386 1 72 13 552,

Fax +386 1 72 19 360

www.controlmatik-abw.si